

## Established Tire Shop Near Manchester & Waterloo Road Intersection



**2526 Manchester Rd.**  
Akron, Ohio 44319

### Property Features

- Sale price: \$195,000
- Available space: 1,890 SF
- Acres: 0.46
- High traffic area
- I-277 Entrance/Exit is within 500 ft.
- Income available from billboard on property

### For more information:

**David Whyte**

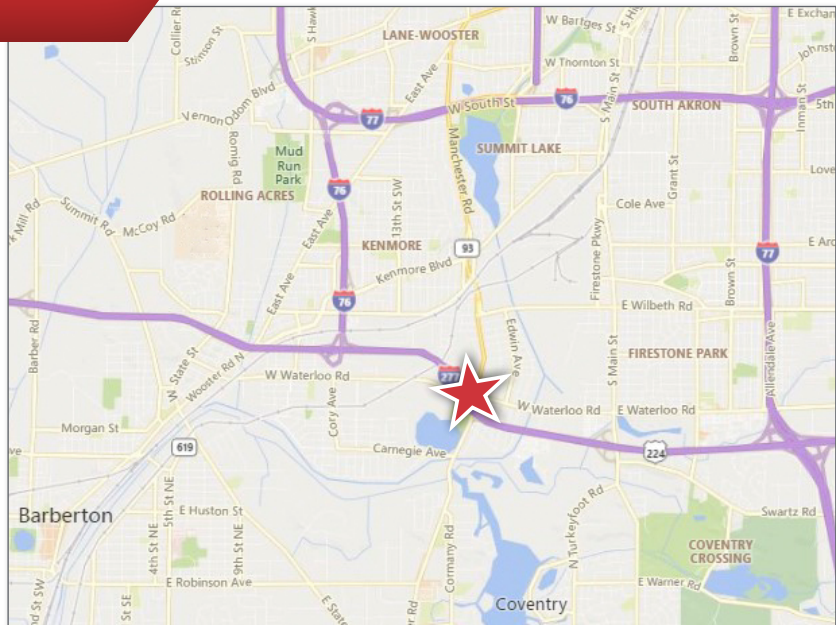
330 352 7746

dwhyte@naipvc.com

**Karen Whyte**

330 351 1757

kwhyte@naipvc.com



NO WARRANTY OR REPRESENTATION, EXPRESS OR IMPLIED, IS MADE AS TO THE ACCURACY OF THE INFORMATION CONTAINED HEREIN, AND THE SAME IS SUBMITTED SUBJECT TO ERRORS, OMISSIONS, CHANGE OF PRICE, RENTAL OR OTHER CONDITIONS, PRIOR SALE, LEASE OR FINANCING, OR WITHDRAWAL WITHOUT NOTICE, AND OF ANY SPECIAL LISTING CONDITIONS IMPOSED BY OUR PRINCIPALS NO WARRANTIES OR REPRESENTATIONS ARE MADE AS TO THE CONDITION OF THE PROPERTY OR ANY HAZARDS CONTAINED THEREIN ARE ANY TO BE IMPLIED.

540 White Pond Drive | Suite A  
Akron, Ohio, 44320  
+1 330 535 2661  
naipvc.com



2526 Manchester Rd.

Akron, Ohio 44319

FOR SALE



For more information:

**David Whyte**

330 352 7746

dwhyte@naipvc.com

**Karen Whyte**

330 351 1757

kwhyte@naipvc.com

**NAIPleasant Valley**  
COMMERCIAL REAL ESTATE SERVICES, WORLDWIDE

540 White Pond Drive | Suite A

Akron, Ohio, 44320

+1 330 535 2661

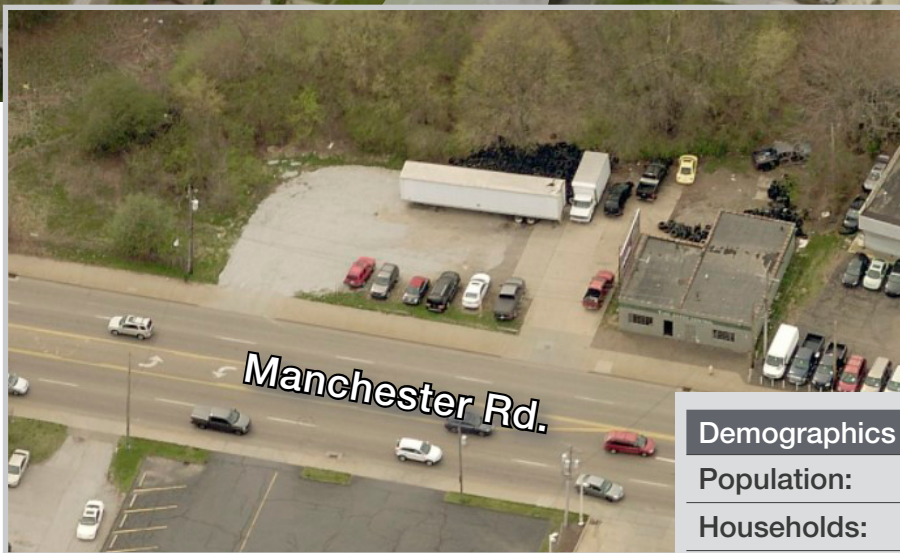
naipvc.com



# 2526 Manchester Rd.

Akron, Ohio 44319

# FOR SALE



Demographics	1 Mile	3 Miles	5 Miles
Population:	6,638	78,063	173,195
Households:	2,849	32,871	71,166
Median Age:	39.5	38.9	37.9
Average HH Income:	\$47,238	\$53,004	\$54,763
Traffic Counts:	18,292 Manchester Rd @ W Waterloo Rd 69,247 I-277 @ Manchester Rd		

For more information:

**David Whyte**

330 352 7746

dwhyte@naipvc.com

**Karen Whyte**

330 351 1757

kwhyte@naipvc.com

**NAIPleasant Valley**

COMMERCIAL REAL ESTATE SERVICES, WORLDWIDE

540 White Pond Drive | Suite A

Akron, Ohio, 44320

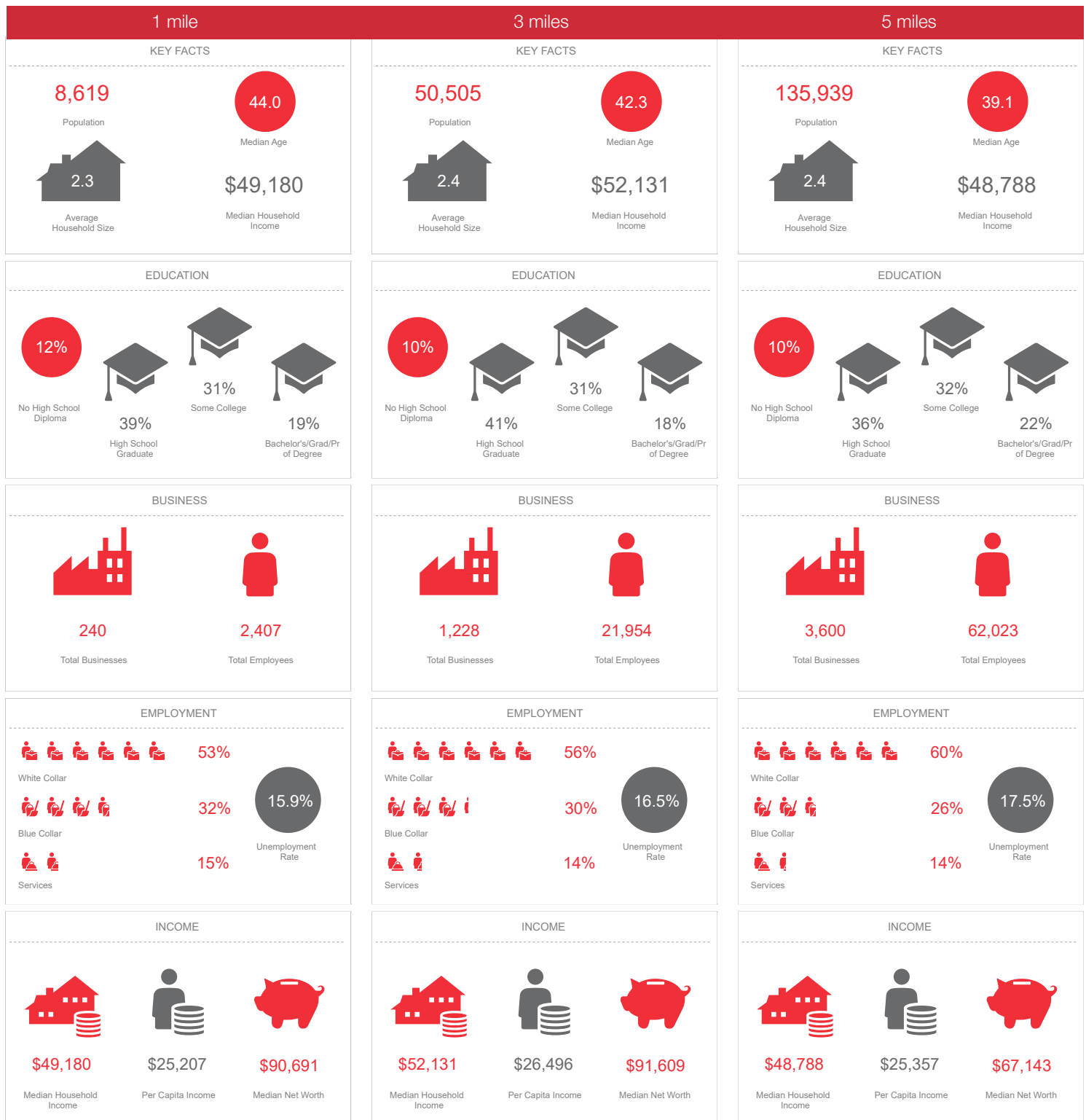
+1 330 535 2661

naipvc.com

# 2526 Manchester Rd.

Akron, Ohio 44319

# FOR SALE



David Whyte  
330 352 7746  
dwhyte@naipvc.com

Karen Whyte  
330 351 1757  
kwhyte@naipvc.com