

NAIPleasant Valley

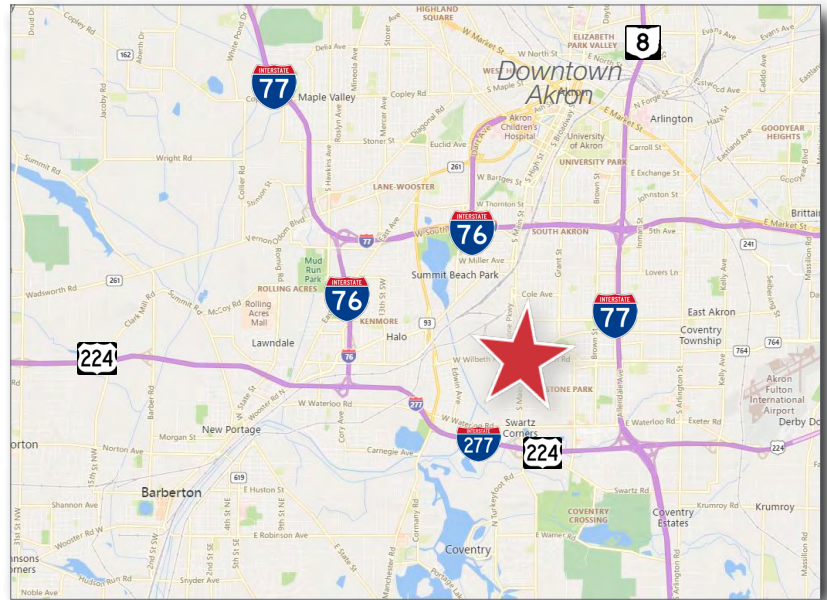
For Sale or Lease
9,328 SF
Showroom/Auto Repair



1776 Main Street Akron, Ohio 44301

Property Details

- Sale Price: \$495,000
- Price Per SF: \$53.07
- Lease Rate: \$5.60 PSF
- Acres: 0.65
- Parcels: 6852319, 6819147
- Zoning: U-4 Commercial
- Location: Firestone Park, near Downtown Akron
- Interchange / Distance:
 - I-277/SR-224 / less than 1 mile
 - I-77 / 1.25 miles
- 50 years of history as a used car dealership
- Great indoor sales opportunity with repair shop



David Whyte

+1 330 352 7746 • dwhyte@naipvc.com

Karen Whyte

+1 330 351 1757 • kwhyte@naipvc.com

NO WARRANTY OR REPRESENTATION, EXPRESS OR IMPLIED, IS MADE AS TO THE ACCURACY OF THE INFORMATION CONTAINED HEREIN, AND THE SAME IS SUBMITTED SUBJECT TO ERRORS, OMISSIONS, CHANGE OF PRICE, RENTAL OR OTHER CONDITIONS, PRIOR SALE, LEASE OR FINANCING, OR WITHDRAWAL WITHOUT NOTICE, AND OF ANY SPECIAL LISTING CONDITIONS IMPOSED BY OUR PRINCIPALS NO WARRANTIES OR REPRESENTATIONS ARE MADE AS TO THE CONDITION OF THE PROPERTY OR ANY HAZARDS CONTAINED THEREIN ARE ANY TO BE IMPLIED.

540 White Pond Dr. • Suite A
Akron, Ohio 44320
+1 330 535 2661
naipvc.com

NAIPleasant Valley

For Sale or Lease
9,328 SF
Showroom/Auto Repair
1776 S. Main St.
Akron, OH 44310



For more information:

David Whyte

+1 330 352 7746 • dwhyte@naipvc.com

Karen Whyte

+1 330 351 1757 • kwhyte@naipvc.com

NAIPleasant Valley

540 White Pond Dr. • Suite A
Akron, Ohio 44320
+1 330 535 2661
naipvc.com

NAIPleasant Valley

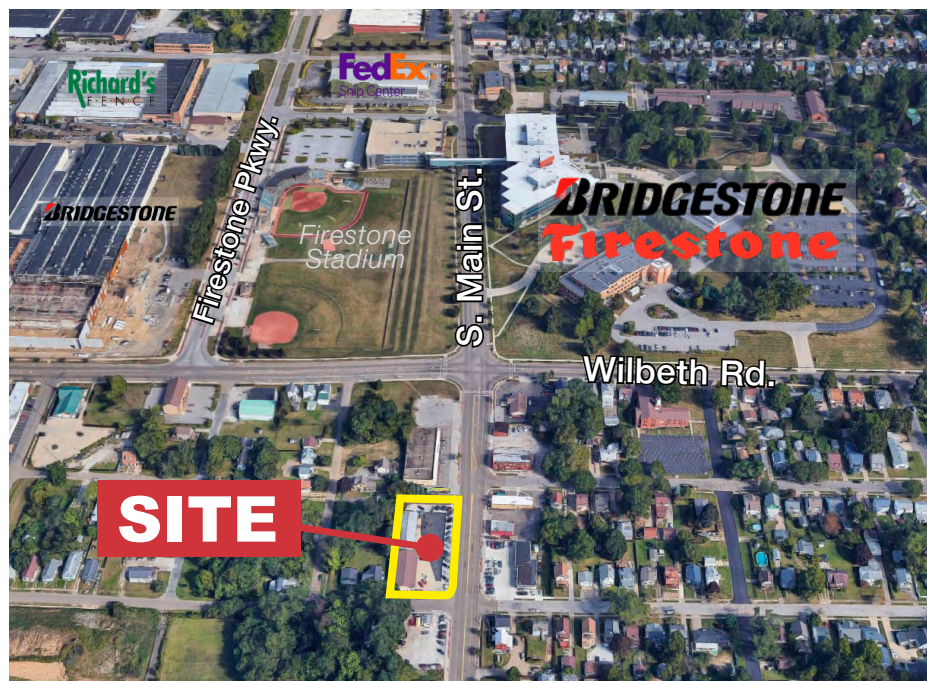
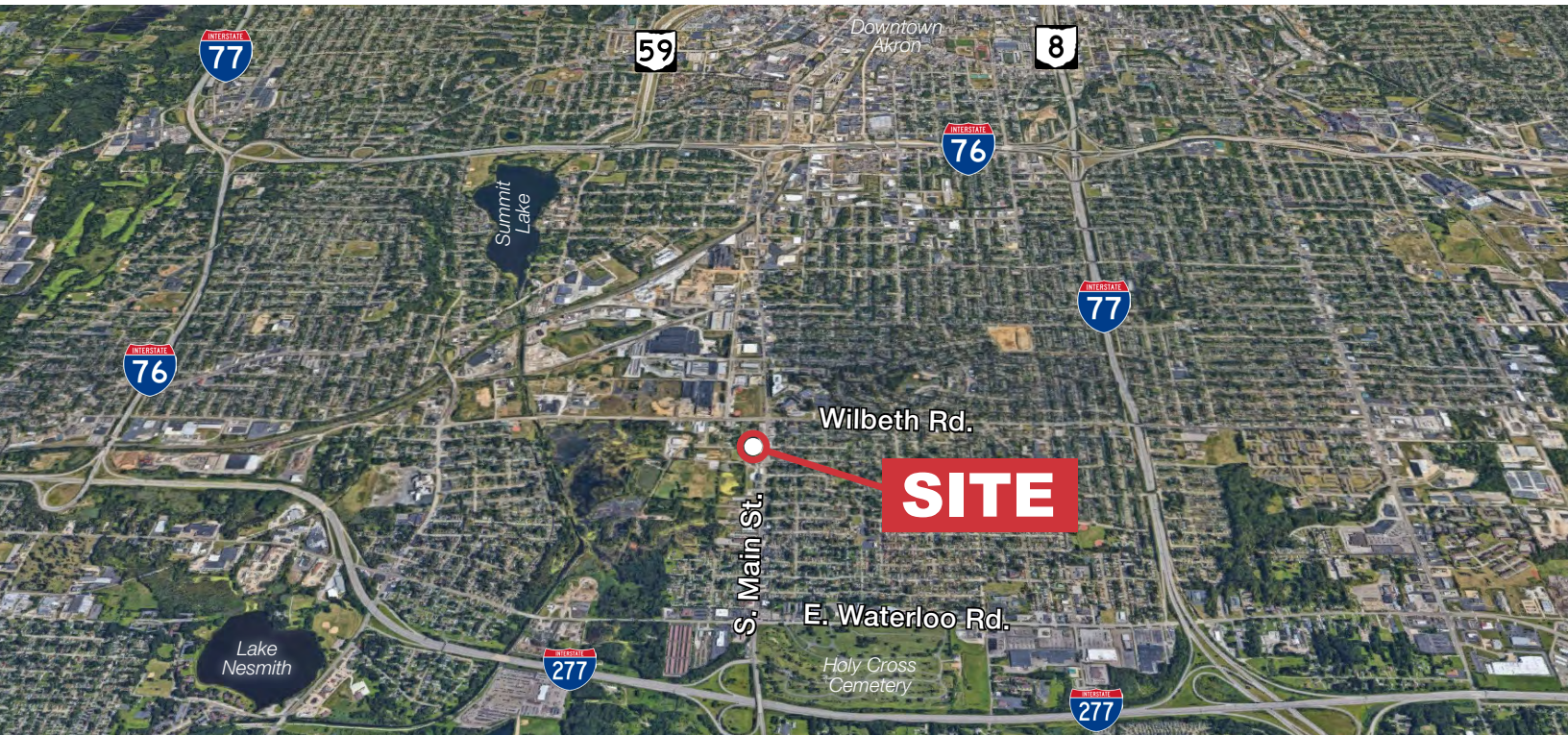
For Sale or Lease

9,328 SF

Showroom/Auto Repair

1776 S. Main St.

Akron, OH 44310



David Whyte

+1 330 352 7746 • dwhyte@naipvc.com

Karen Whyte

+1 330 351 1757 • kwhyte@naipvc.com

NAIPleasant Valley

540 White Pond Dr. • Suite A

Akron, Ohio 44320

+1 330 535 2661

naipvc.com

Property Details

AVAILABLE SF	9,328
ACRES	0.65
PARCEL #	6819147 6852319
"DRIVE-IN" DOORS	11
ZONING	U-4 Commercial
FRONTAGE	220'

Price Details

SALE PRICE	\$495,000
LEASE RATE	\$5.60 PSF

Location Details

LOCATION	Corner of S. Main St. and W. Dartmore Ave. in Firestone Park area, near Downtown Akron
DAILY TRAFFIC COUNT	13,173 Main St. @ W. Wilbeth Rd.
INTERCHANGE / DISTANCE	I-277/SR-224 / less than 1 mile I-77 / 1.25 miles

Demographics	1 Mile	3 Miles	5 Miles
Population:	10,759	85,650	197,163
Households:	4,505	34,289	81,580
Median Age:	39.1	34.1	38
Average HH Income:	\$60,548	\$46,933	\$54,766
Traffic Count:	13,173 S. Main St. @ W. Wilbeth Rd.		

For more information:

David Whyte

+1 330 352 7746 • dwhyte@naipvc.com

Karen Whyte

+1 330 351 1757 • kwhyte@naipvc.com