

PRICE REDUCED!



1920 Georgetown Rd.

Hudson, OH 44236

Property Features

- Available space: 10,000 SF
- 1st floor & 2nd floor availability
- Divisible by 2,500 SF (approximate)
- Situated on 5 acres providing an abundance of land for expansion
- Parking: 70 surface spaces
- Easily accessible from I-80 OH Turnpike & Darrow Rd.
- Major renovations over the last 6 months: new carpet, lighting, and exterior
- Hudson Gig
- Main electrical: 200 Amp
- Central fire alarm



Ronald Midcap II

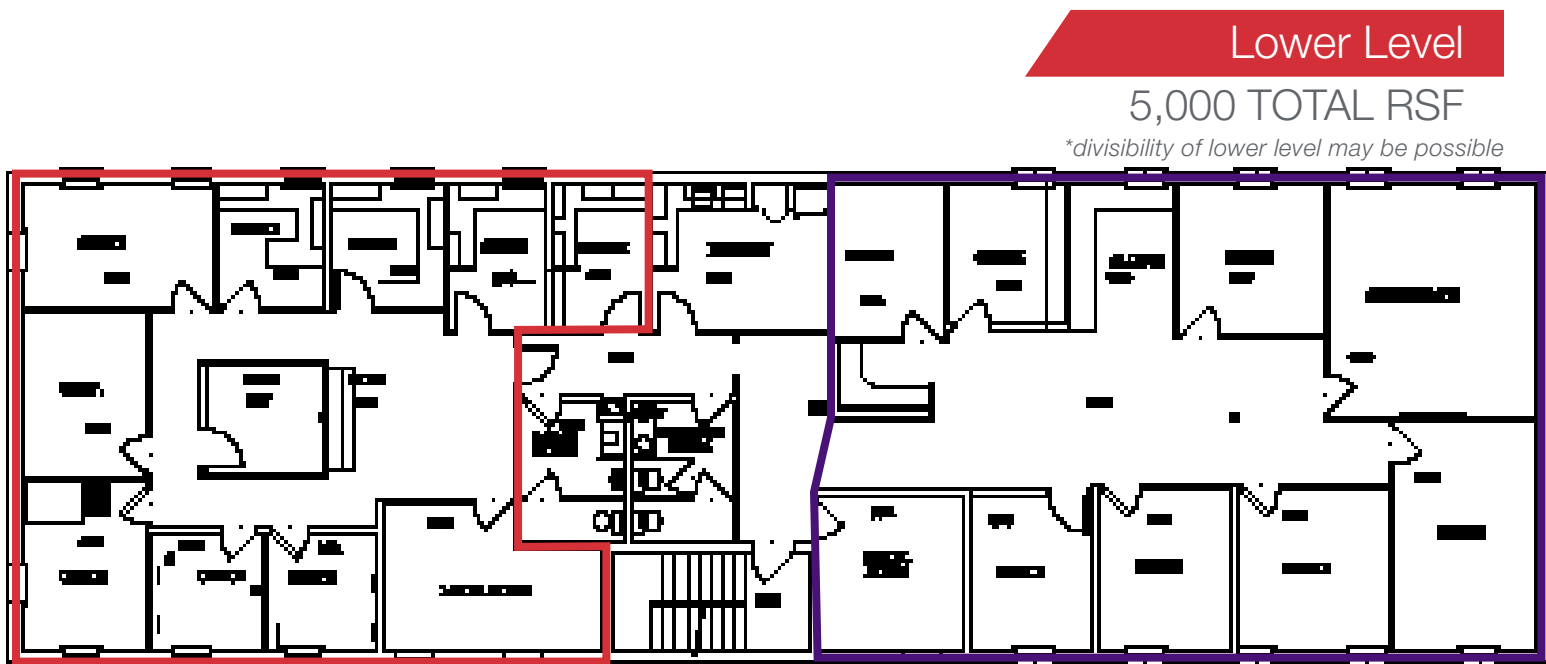
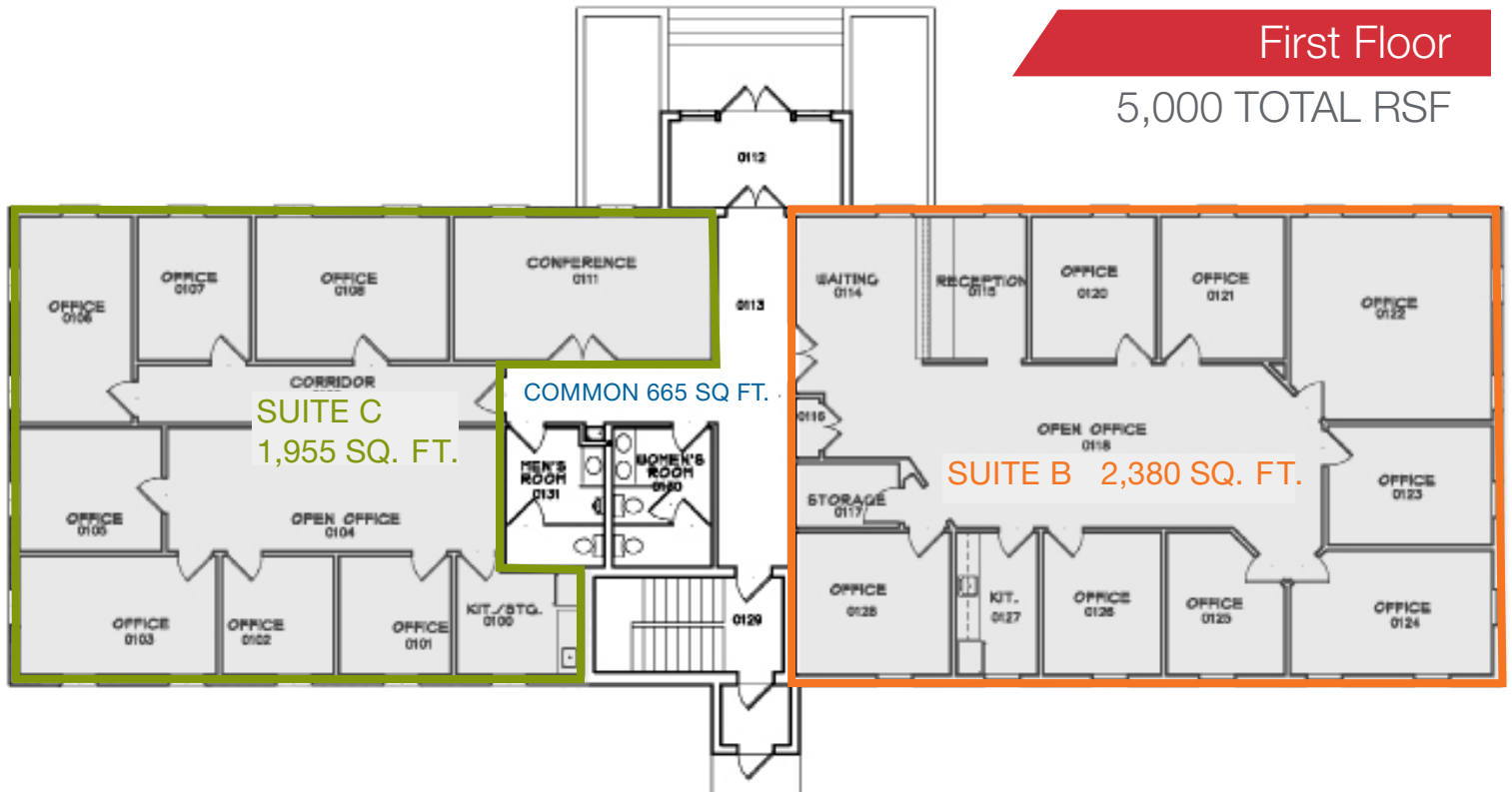
+1 216 455 0900 | RMidcap@naipvc.com

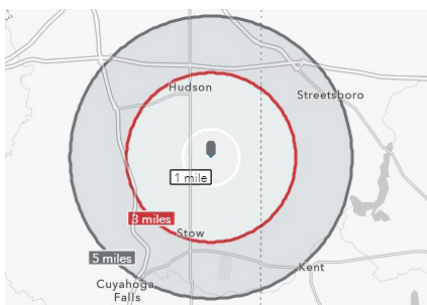
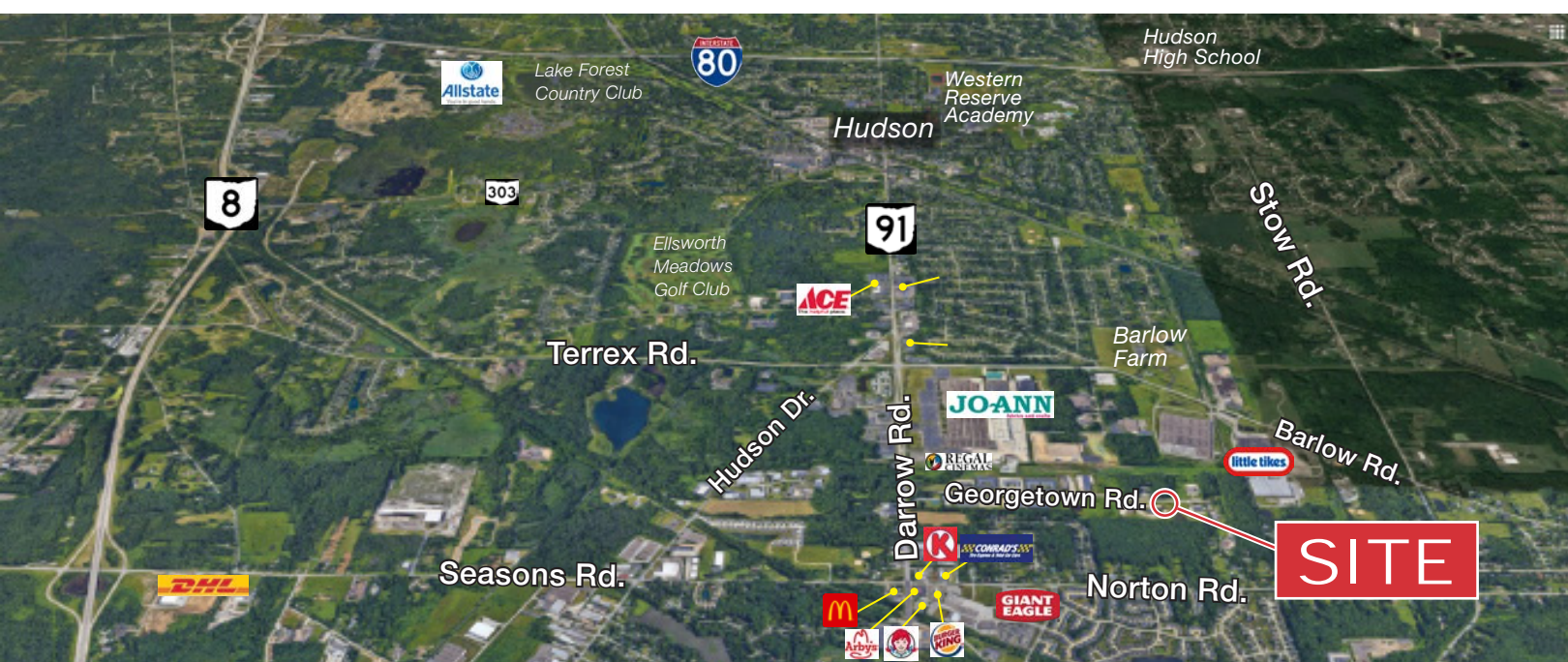
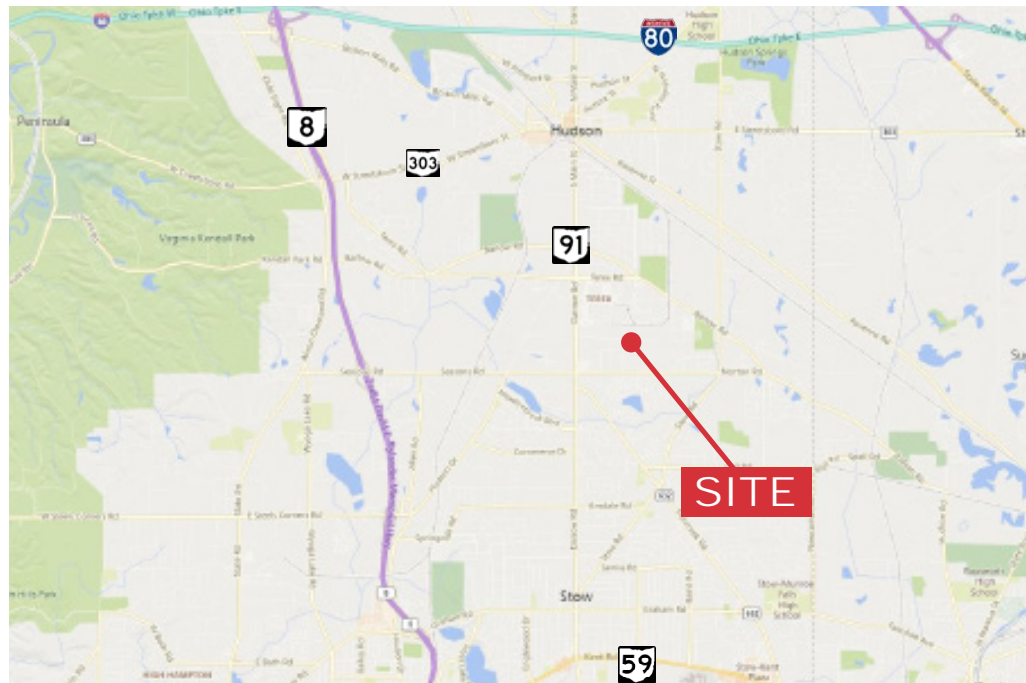
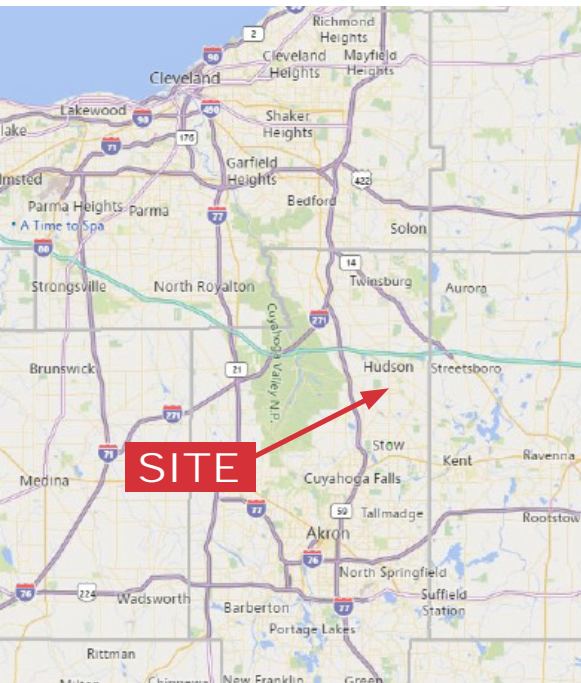












Demographics	1 Mile	3 Miles	5 Miles
Population:	3,746	35,687	93,030
Median Age:	42.5	42.8	42.5
Average HH Income:	\$120,265	\$105,149	\$95,595
Traffic Count:	19,980 CPD Darrow Rd. @ Norton Rd.		

1 mile

KEY FACTS

3,746

Population

42.5

Median Age



Average Household Size

\$120,265

Median Household Income

EDUCATION

1%

No High School Diploma



13%
High School Graduate



18%
Some College



68%
Bachelor's/Grad/Pr of Degree

BUSINESS



257

Total Businesses



4,895

Total Employees

EMPLOYMENT



81.7%

White Collar



9.6%

Blue Collar



8.8%

Services

1.2%

Unemployment Rate

INCOME



\$120,265

Median Household Income



\$58,883

Per Capita Income



\$593,035

Median Net Worth

2024 Households by income (Esri)

The largest group: \$100,000 - \$149,999 (21.1%)

The smallest group: \$15,000 - \$24,999 (2.5%)

Indicator ▲	Value	Diff	
<\$15,000	4.7%	-4.4%	
\$15,000 - \$24,999	2.5%	-4.8%	
\$25,000 - \$34,999	6.8%	-1.1%	
\$35,000 - \$49,999	5.8%	-5.8%	
\$50,000 - \$74,999	10.9%	-6.7%	
\$75,000 - \$99,999	8.6%	-4.7%	
\$100,000 - \$149,999	21.1%	+5.4%	
\$150,000 - \$199,999	18.6%	+9.5%	
\$200,000+	21.1%	+12.7%	

Bars show deviation from Summit County

3 miles

KEY FACTS

35,687

Population

42.8

Median Age



Average Household Size

\$105,149

Median Household Income

EDUCATION

2%

No High School Diploma



20%
High School Graduate



20%
Some College



58%
Bachelor's/Grad/Pr of Degree

BUSINESS



1,764

Total Businesses



21,333

Total Employees

EMPLOYMENT



75.6%

White Collar



13.3%

Blue Collar



11.2%

Services

2.7%

Unemployment Rate

INCOME



\$105,149

Median Household Income



\$55,341

Per Capita Income



\$485,378

Median Net Worth

2024 Households by income (Esri)

The largest group: \$100,000 - \$149,999 (20.1%)

The smallest group: \$15,000 - \$24,999 (2.9%)

Indicator ▲	Value	Diff	
<\$15,000	5.5%	-3.6%	
\$15,000 - \$24,999	2.9%	-4.4%	
\$25,000 - \$34,999	4.7%	-3.2%	
\$35,000 - \$49,999	7.3%	-4.3%	
\$50,000 - \$74,999	14.3%	-3.3%	
\$75,000 - \$99,999	12.3%	-1.0%	
\$100,000 - \$149,999	20.1%	+4.4%	
\$150,000 - \$199,999	14.8%	+5.7%	
\$200,000+	18.1%	+9.7%	

Bars show deviation from Summit County

5 miles

KEY FACTS

93,030

Population

42.5

Median Age



Average Household Size

\$94,595

Median Household Income

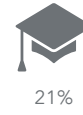
EDUCATION

3%

No High School Diploma



21%
High School Graduate



21%
Some College



55%
Bachelor's/Grad/Pr of Degree

BUSINESS



3,816

Total Businesses



47,876

Total Employees

EMPLOYMENT



71.6%

White Collar



16.0%

Blue Collar



12.5%

Services

3.0%

Unemployment Rate

INCOME



\$94,595

Median Household Income



\$54,328

Per Capita Income



\$366,842

Median Net Worth

2024 Households by income (Esri)

The largest group: \$100,000 - \$149,999 (19.5%)

The smallest group: \$15,000 - \$24,999 (4.0%)

Indicator ▲	Value	Diff	
<\$15,000	6.2%	-2.9%	
\$15,000 - \$24,999	4.0%	-3.3%	
\$25,000 - \$34,999	5.3%	-2.6%	
\$35,000 - \$49,999	8.4%	-3.2%	
\$50,000 - \$74,999	14.9%	-2.7%	
\$75,000 - \$99,999	13.6%	+0.3%	
\$100,000 - \$149,999	19.5%	+3.8%	
\$150,000 - \$199,999	12.8%	+3.7%	
\$200,000+	15.3%	+6.9%	

Bars show deviation from Summit County