

2710 Walton Ave., Cleveland, OH



Property Features

- Building 1: 15,108 SF
Building 2: 7,554
Total: 22,359 SF
- Site Size: .413 Acres
- Parcel #: 007-27-046 & 007-27-041
- 10 minutes from Downtown Cleveland
- Well located between up and coming cities of Tremont and Ohio City
- Opportunity to modernize this historic multi-use facility to fit ones needs



Alec J. Pacella, CCIM
+1 216 455 0925
apacella@naipvc.com

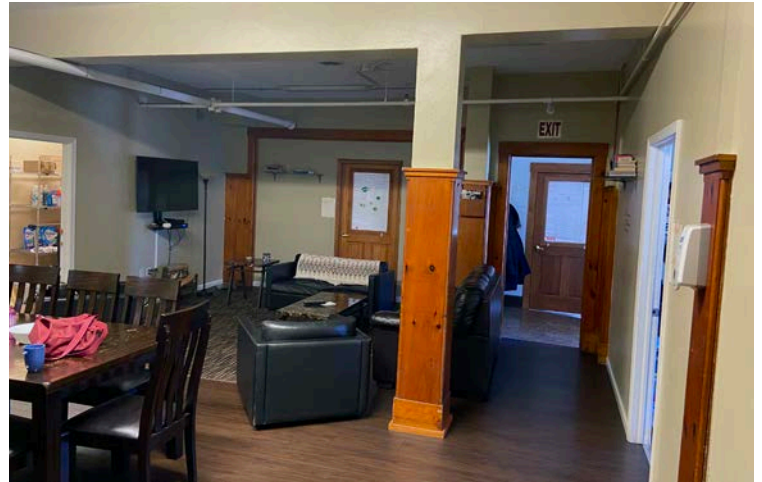
Joe Hauman
+1 216 455 0885
joe.hauman@naipvc.com

NO WARRANTY OR REPRESENTATION, EXPRESS OR IMPLIED, IS MADE AS TO THE ACCURACY OF THE INFORMATION CONTAINED HEREIN, AND THE SAME IS SUBMITTED SUBJECT TO ERRORS, OMISSIONS, CHANGE OF PRICE, RENTAL OR OTHER CONDITIONS, PRIOR SALE, LEASE OR FINANCING, OR WITHDRAWAL WITHOUT NOTICE, AND OF ANY SPECIAL LISTING CONDITIONS IMPOSED BY OUR PRINCIPALS NO WARRANTIES OR REPRESENTATIONS ARE MADE AS TO THE CONDITION OF THE PROPERTY OR ANY HAZARDS CONTAINED THEREIN ARE ANY TO BE IMPLIED.

6155 Rockside Road, Suite 304
Independence, Ohio 44131
+1 216 831 3310
naipvc.com

FOR SALE

Interior Photos

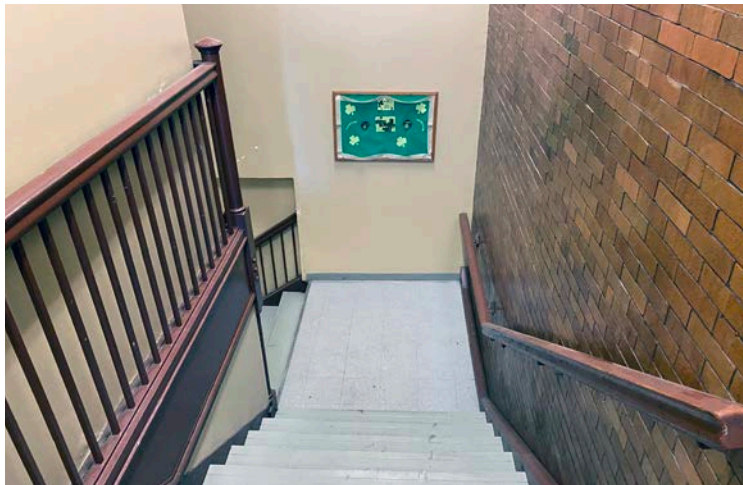


Alec J. Pacella, CCIM
+1 216 455 0925
apacella@naipvc.com

Joe Hauman
+1 216 455 0885
joe.hauman@naipvc.com

FOR SALE

Interior Photos

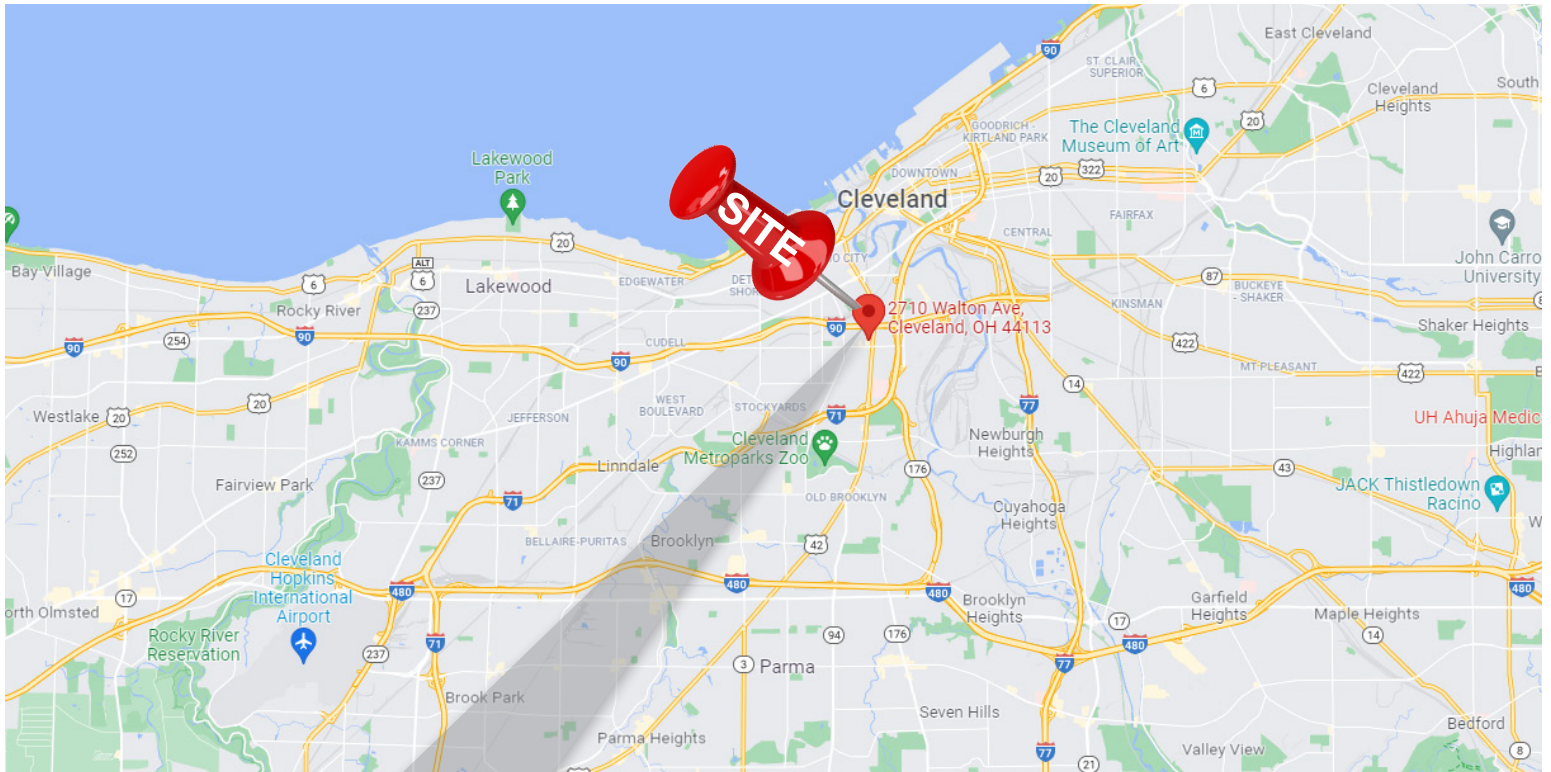


Alec J. Pacella, CCIM
+1 216 455 0925
apacella@naipvc.com

Joe Hauman
+1 216 455 0885
joe.hauman@naipvc.com

FOR SALE

Location

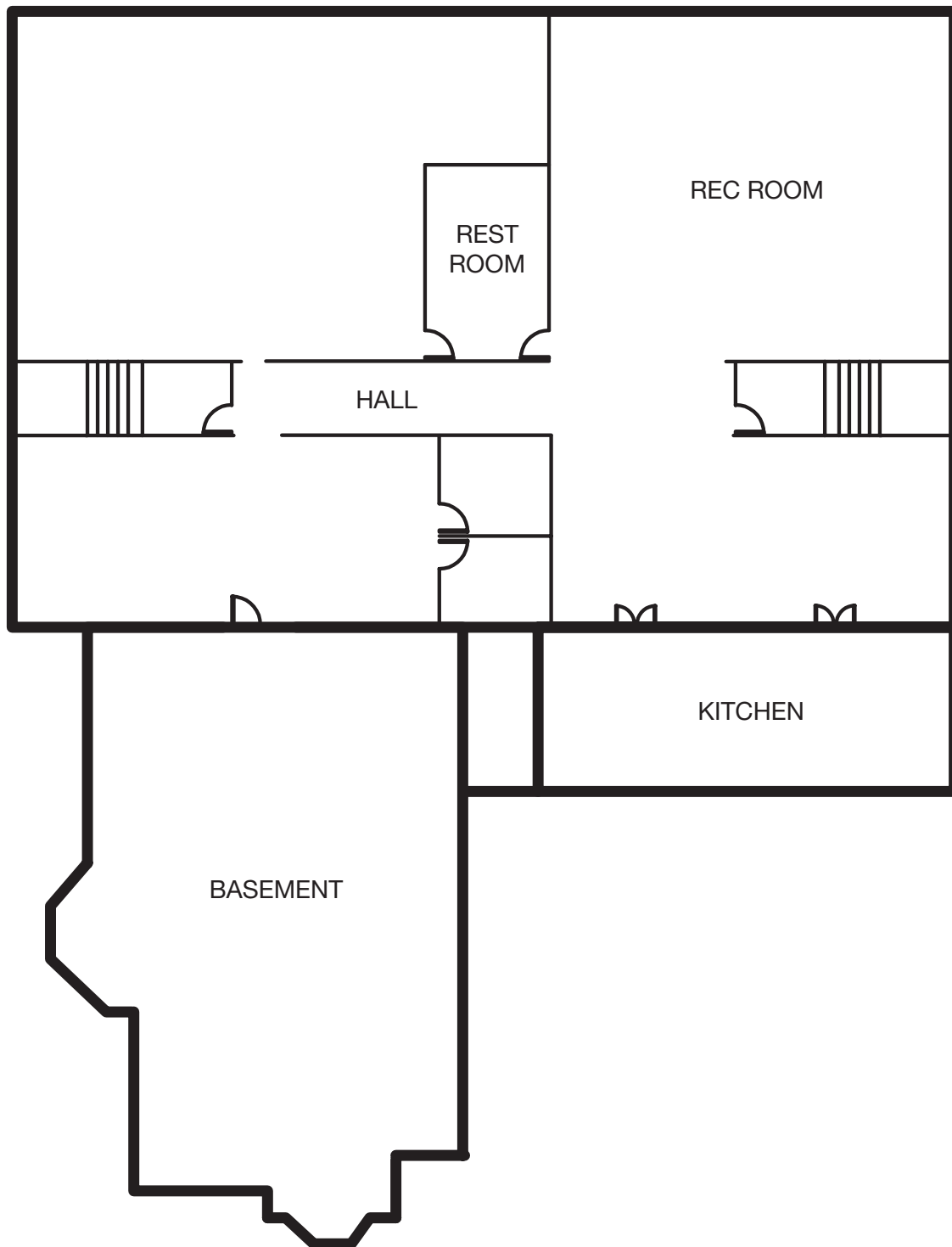


Alec J. Pacella, CCIM
+1 216 455 0925
apacella@naipvc.com

Joe Hauman
+1 216 455 0885
joe.hauman@naipvc.com

FLOORPLAN

Basement

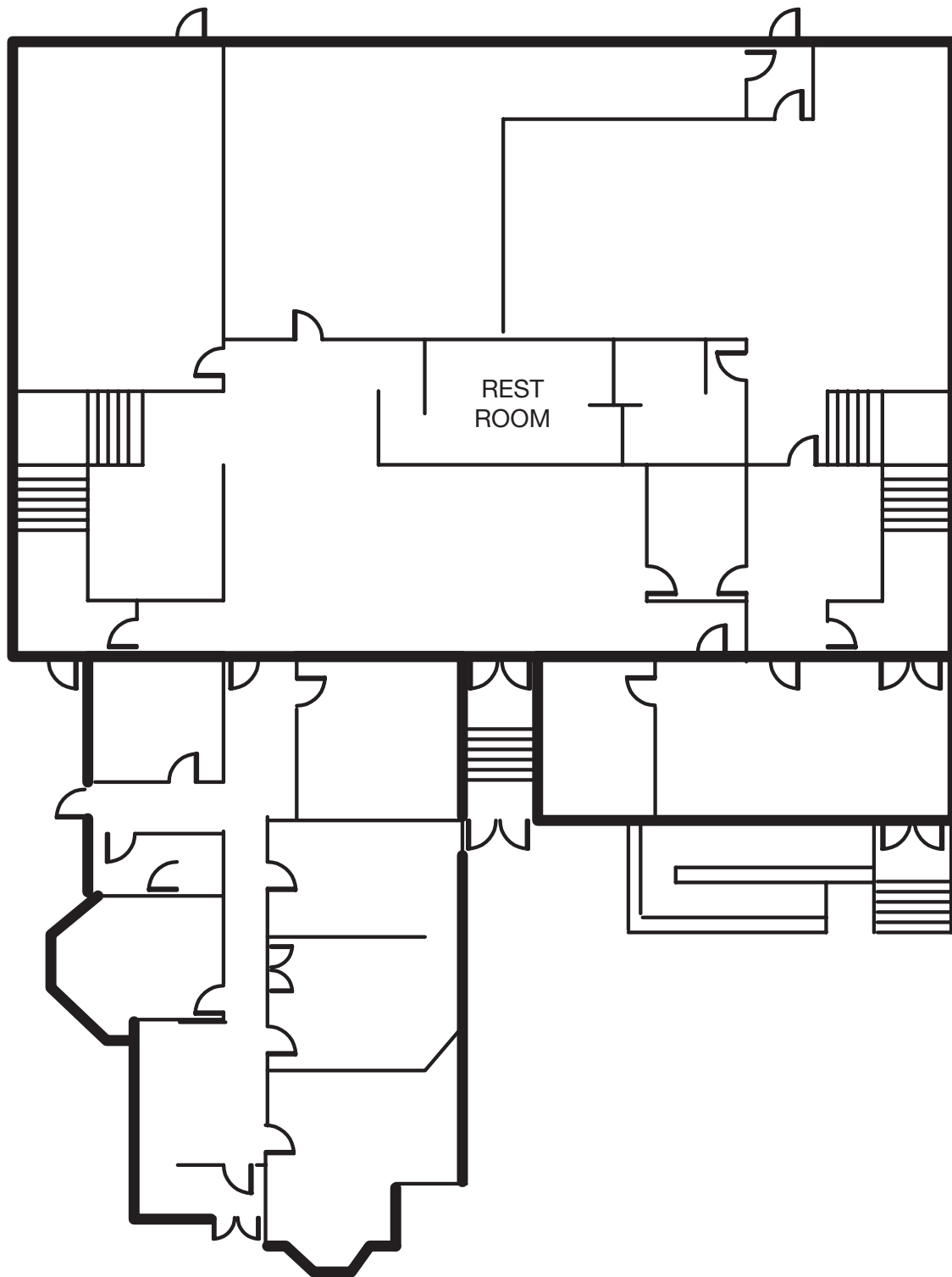


Alec J. Pacella, CCIM
+1 216 455 0925
apacella@naipvc.com

Joe Hauman
+1 216 455 0885
joe.hauman@naipvc.com

FLOORPLAN

1st Floor

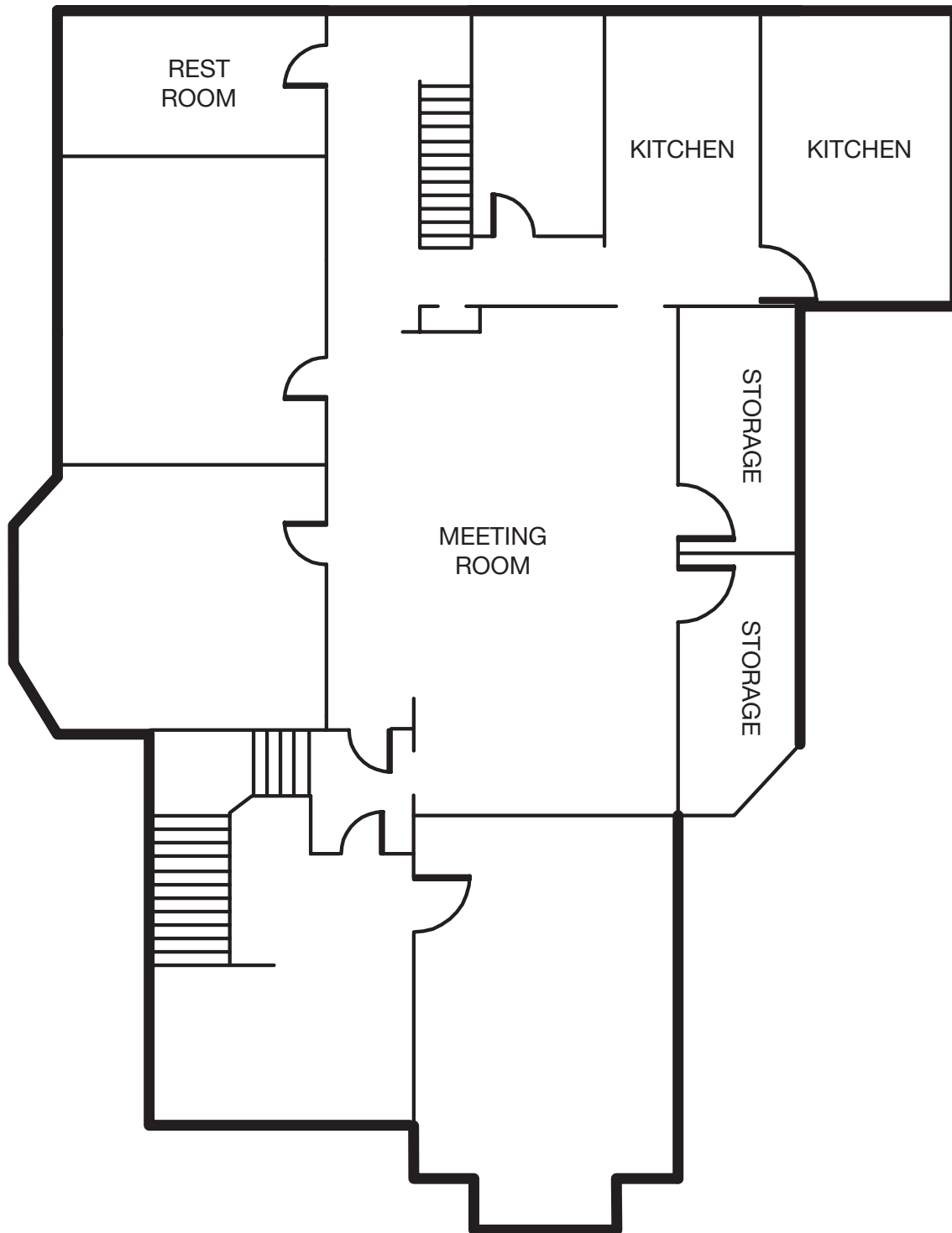


Alec J. Pacella, CCIM
+1 216 455 0925
apacella@naipvc.com

Joe Hauman
+1 216 455 0885
joe.hauman@naipvc.com

FLOORPLAN

2nd Floor (House)



Alec J. Pacella, CCIM
+1 216 455 0925
apacella@naipvc.com

Joe Hauman
+1 216 455 0885
joe.hauman@naipvc.com

DEMOGRAPHICS

1 Mile Radius

KEY FACTS

17,487

Population



2.4

Average Household Size

35.0

Median Age

\$34,709

Median Household Income

EDUCATION

24%

No High School Diploma



28%

High School Graduate



23%

Some College



25%

Bachelor's/Grad/Pr of Degree

BUSINESS



805

Total Businesses



25,735

Total Employees

EMPLOYMENT



57%

White Collar



28%

Blue Collar



15%

Services

11.0%

Unemployment Rate

INCOME



\$34,709

Median Household Income



\$21,026

Per Capita Income



\$13,417

Median Net Worth

Households By Income

The largest group: <\$15,000 (23.7%)

The smallest group: \$200,000+ (2%)

Indicator ▲	Value	Diff	
<\$15,000	23.7%	+9.5%	
\$15,000 - \$24,999	14.8%	+4.5%	
\$25,000 - \$34,999	11.7%	+1.9%	
\$35,000 - \$49,999	12.3%	-0.3%	
\$50,000 - \$74,999	14.5%	-3.4%	
\$75,000 - \$99,999	9.3%	-2.7%	
\$100,000 - \$149,999	9.2%	-3.8%	
\$150,000 - \$199,999	2.5%	-2.4%	
\$200,000+	2%	-3.5%	

Bars show deviation from

Cuyahoga County

This infographic contains data provided by Esri, Esri and Infogroup. The vintage of the data is 2021, 2026.

© 2021 Esri

Alec J. Pacella, CCIM

+1 216 455 0925

apacella@naipvc.com

Joe Hauman

+1 216 455 0885

joe.hauman@naipvc.com

DEMOGRAPHICS

3 Mile Radius

KEY FACTS

130,395

Population



2.3

Average Household Size

34.1

Median Age

\$34,140

Median Household Income

EDUCATION

20%

No High School Diploma



30%

High School Graduate



27%

Some College



23%

Bachelor's/Grad/Pr of Degree

BUSINESS



6,270

Total Businesses



142,522

Total Employees

EMPLOYMENT



60%

White Collar



25%

Blue Collar



15%

Services

11.9%

Unemployment Rate

INCOME



\$34,140

Median Household Income



\$21,813

Per Capita Income



\$13,253

Median Net Worth

Households By Income

The largest group: <\$15,000 (25.4%)

The smallest group: \$200,000+ (2.3%)

Indicator ▲	Value	Diff	
<\$15,000	25.4%	+11.2%	
\$15,000 - \$24,999	14.2%	+3.9%	
\$25,000 - \$34,999	11.2%	+1.4%	
\$35,000 - \$49,999	12.8%	+0.2%	
\$50,000 - \$74,999	16.1%	-1.8%	
\$75,000 - \$99,999	8.4%	-3.6%	
\$100,000 - \$149,999	7.2%	-5.8%	
\$150,000 - \$199,999	2.5%	-2.4%	
\$200,000+	2.3%	-3.2%	

Bars show deviation from

Cuyahoga County

This infographic contains data provided by Esri, Esri and Infogroup. The vintage of the data is 2021, 2026.

© 2021 Esri

Alec J. Pacella, CCIM

+1 216 455 0925

apacella@naipvc.com

Joe Hauman

+1 216 455 0885

joe.hauman@naipvc.com